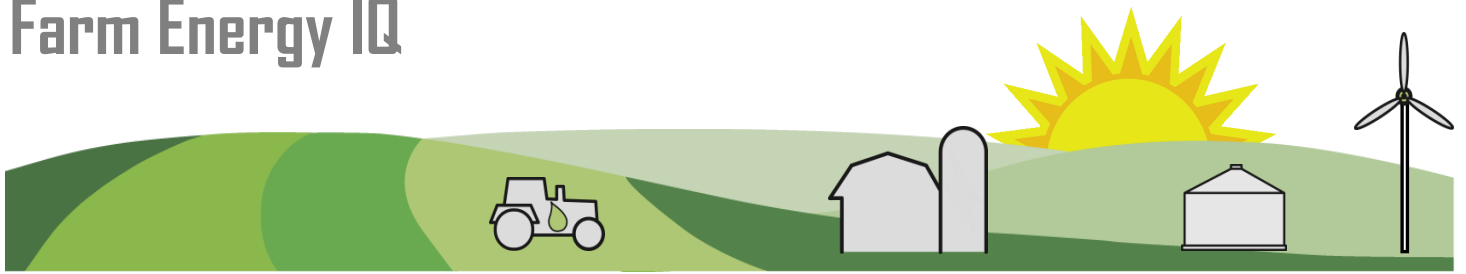
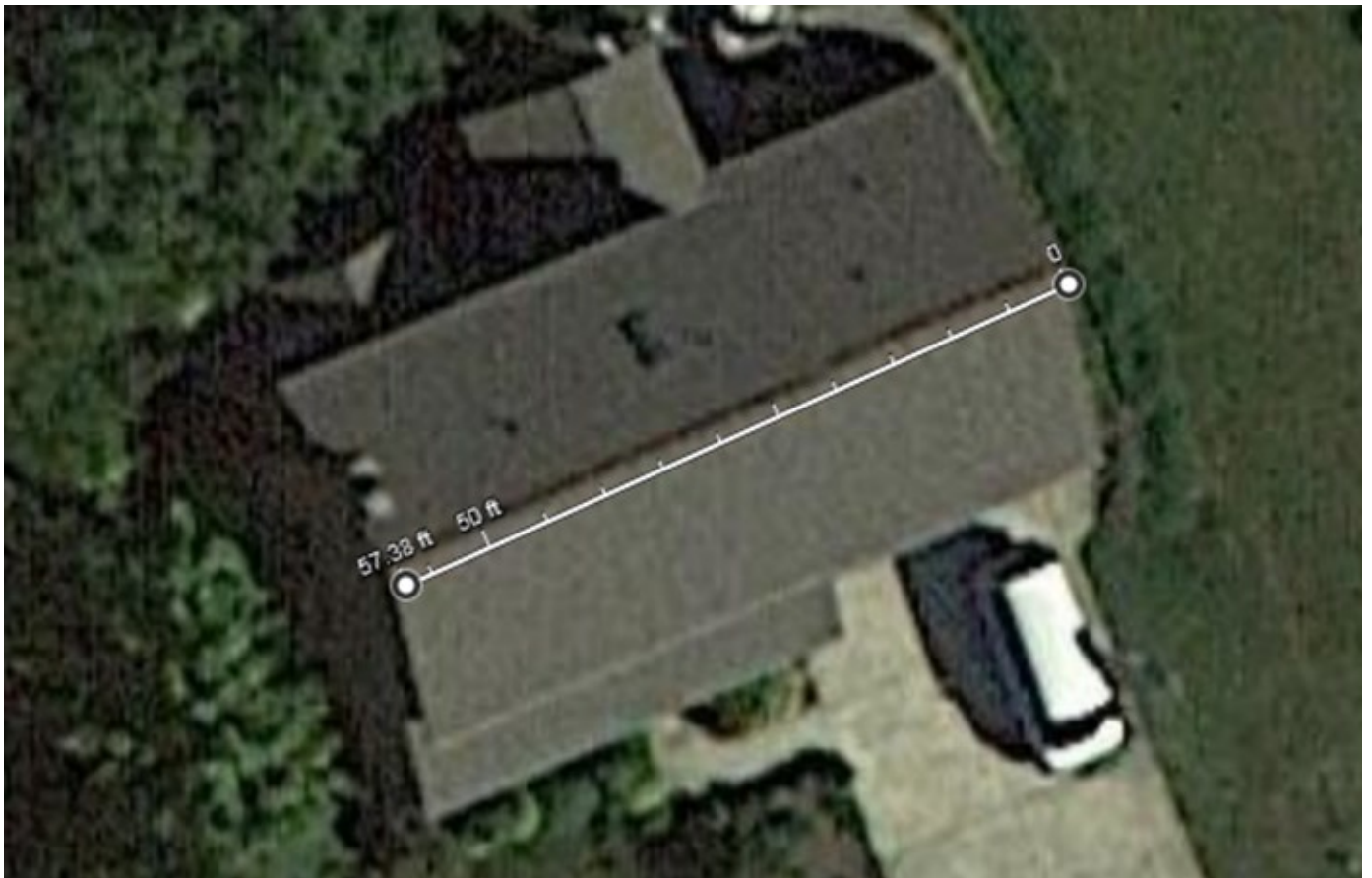


# Farm Energy IQ



## Solar Energy on Farms—Activity

### Estimating Photovoltaic Electricity Output





Assume roof mount system.

Approximate dimensions of front main roof: 57' by 12'

Approximate azimuth of front main roof: 160°

Approximate dimensions of a solar PV panel: 3' by 5'

Estimate number of solar PV panels and maximum output at 150 watts per panel.

ZIP code is 15601

Use PVWatts to estimate annual energy output.

This project supported by the Northeast Sustainable Agriculture Research and Education (SARE) program. SARE is a program of the National Institute of Food and Agriculture, U.S. Department of Agriculture. Significant efforts have been made to ensure the accuracy of the material in this report, but errors do occasionally occur, and variations in system performance are to be expected from location to location and from year to year.

Any mention of brand names or models in this report is intended to be of an educational nature only, and does not imply any endorsement for or against the product.

The organizations participating in this project are committed to equal access to programs, facilities, admission and employment for all persons.

